

73 EQ JR

3 BAND EQ
500 Series Module



USER MANUAL

INTRODUCTION

Thank you for choosing the **73 EQ JR**. Heritage Audio is dedicated to bringing you ‘the sound of yesterday for tomorrow’. We specialize in capturing that unique, enticing sound that everybody has fallen in love with. For years engineers, producers and musicians have been yearning for that classic vibe. Usually the only option is to search for old, used original equipment that is almost always in a questionable state of operation. This brings with it a whole lot of other issues, making the experience less than desirable. Not to mention the very high prices asked for this equipment, which makes them virtually unobtainable for the great majority. Now it’s possible to obtain that same sound with a brand new piece that will give you all the problem-free, heavy-duty use you’ll need for years of music making history.

Peter Rodriguez
CEO
Heritage Audio - Madrid, Spain



© 2022 Heritage Audio S.L. is the sole owner of the copyright of all information and drawings contained in this manual which are not to be copied or reproduced by any means or disclosed in part or whole to any third party without written permission.

Heritage Audio reserves the right to alter specifications without notice. The information in this manual has been carefully checked and is believed to be accurate at the time of publication. However, no responsibility is taken by us for inaccuracies, errors or omissions nor any liability assumed for any loss or damage resulting either directly or indirectly from use of the information contained within it.

TABLE OF CONTENTS

INTRODUCTION	2
CONTENTS	2
DESCRIPTION	3
GETTING STARTED	4
APPLICATIONS	5
SPECIFICATIONS	6
SIGNAL FLOW	6
TROUBLE SHOOTING	7
WARRANTY STATEMENT	8
REGISTRATION	8
RECALL SHEETS	9



DESCRIPTION

All the EQ you should ever need

The 73 EQ JR is a fully featured Line Input module for the 500 Series.

It not only shares the 3-band Equalizer with his big brother, the Heritage Audio 73 80 Series, but also shares the same transformer coupled line preamp and Class A transformer balanced output stage.

These facts make the 73EQ JR unique on its class, being able to capture a full transformer based, Class A sound without relying on external preamps.

The Equalizer features the same Baxandall type High and Low shelf found in the HA73 80 Series, with the addition of a high frequency selector switch. 4 different frequencies are possible instead of the fixed 12 kHz one.

The mid band is the same exact dual inductor one, thick low and sweet high midrange boosts without becoming muddy or brittle.

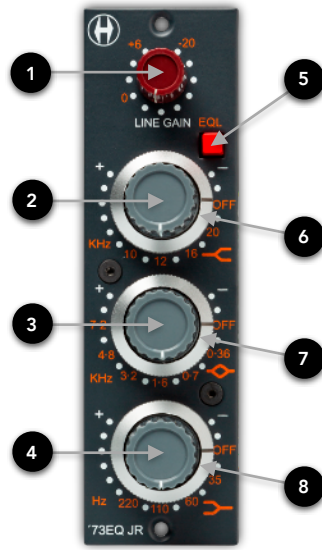
The line preamp has a range of +6 to -20 dB, allowing heavy eq boosts without overloading A/D converters.

Finally, special care has been taken with power handling, implementing internal +24 V slow turn on regulation (about 20 seconds to reach full voltage). This makes your 73 EQ JR independent of the rest of the slots and makes your lunchbox's PSU happier.



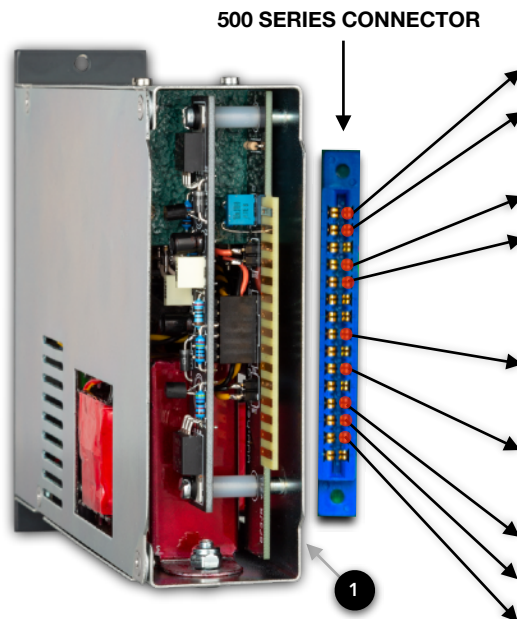
GETTING STARTED

FRONT



1	2	3	4	5
LINE INPUT GAIN From +6 to -20 dB	HIGH SHELF Frequency Selector: 10, 12, 16, 20 kHz	MID PEAK BAND Frequency Selector: 0.36, 0.7, 1.6, 3.2, 4.8, 7.2 kHz	LOW SHELF Frequency Selector: 30, 60, 110, 220 Hz	EQL Activates Equalizer
	6	7	8	
	HIGH SHELF GAIN ±16 dB	MID PEAK BAND GAIN ±18 dB	LOW SHELF GAIN ±16 dB	

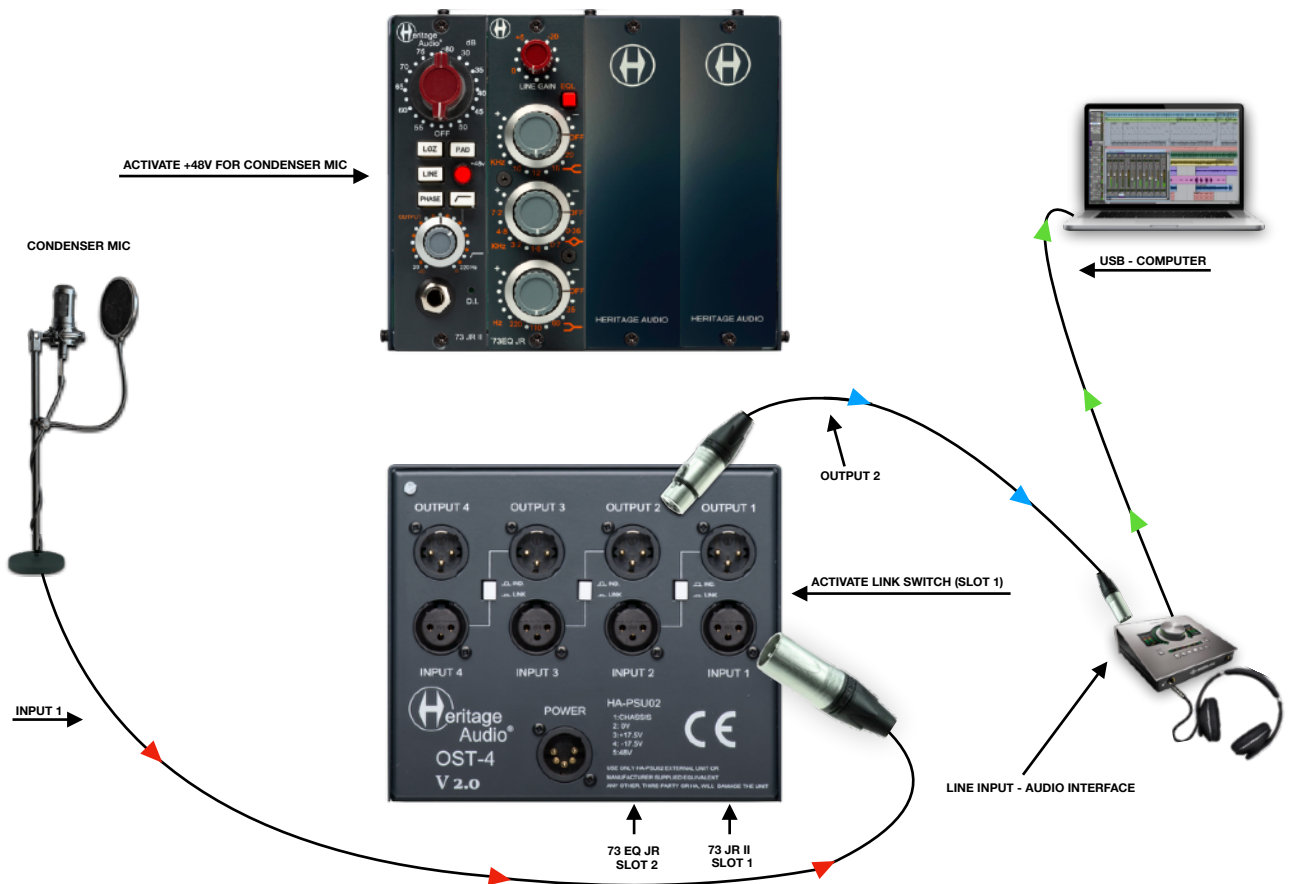
REAR



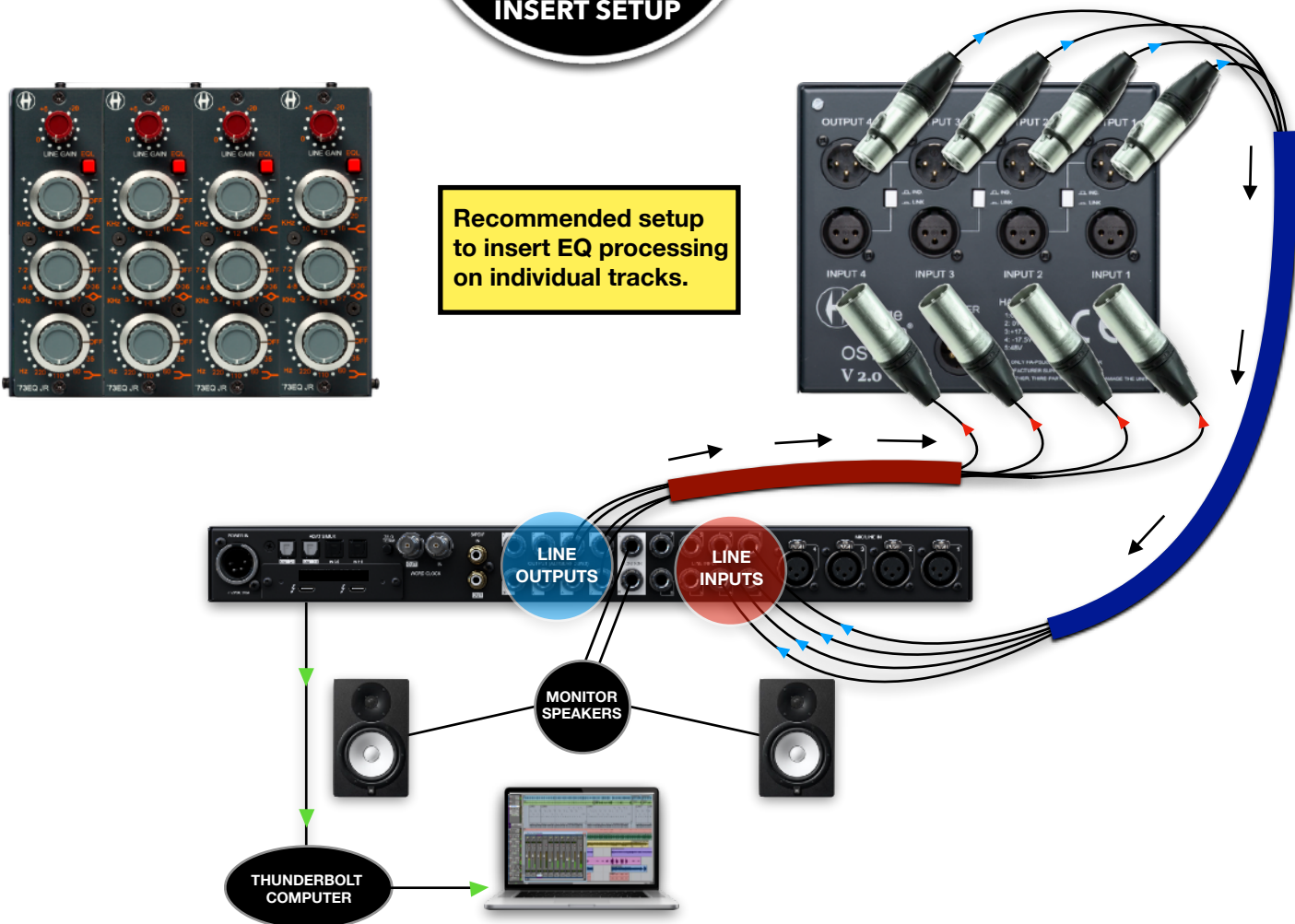
500 SERIES EDGE CONNECTOR PIN OUT	
TERMINAL	FUNCTION
1	CHASSIS GROUND
2	OUTPUT + (4 LEVEL)
3	NOT USED
4	OUTPUT - (4 LEVEL)
5	COMMON
6	NOT USED
7	NOT USED
8	INPUT - (4 LEVEL)
9	NOT USED
10	INPUT + (4 LEVEL)
11	NOT USED
12	+16VCD
13	GND
14	-16VCD
15	NOT USED

1
SLOT CONNECTOR
Gold Plated

MIC - EQ



INSERT SETUP

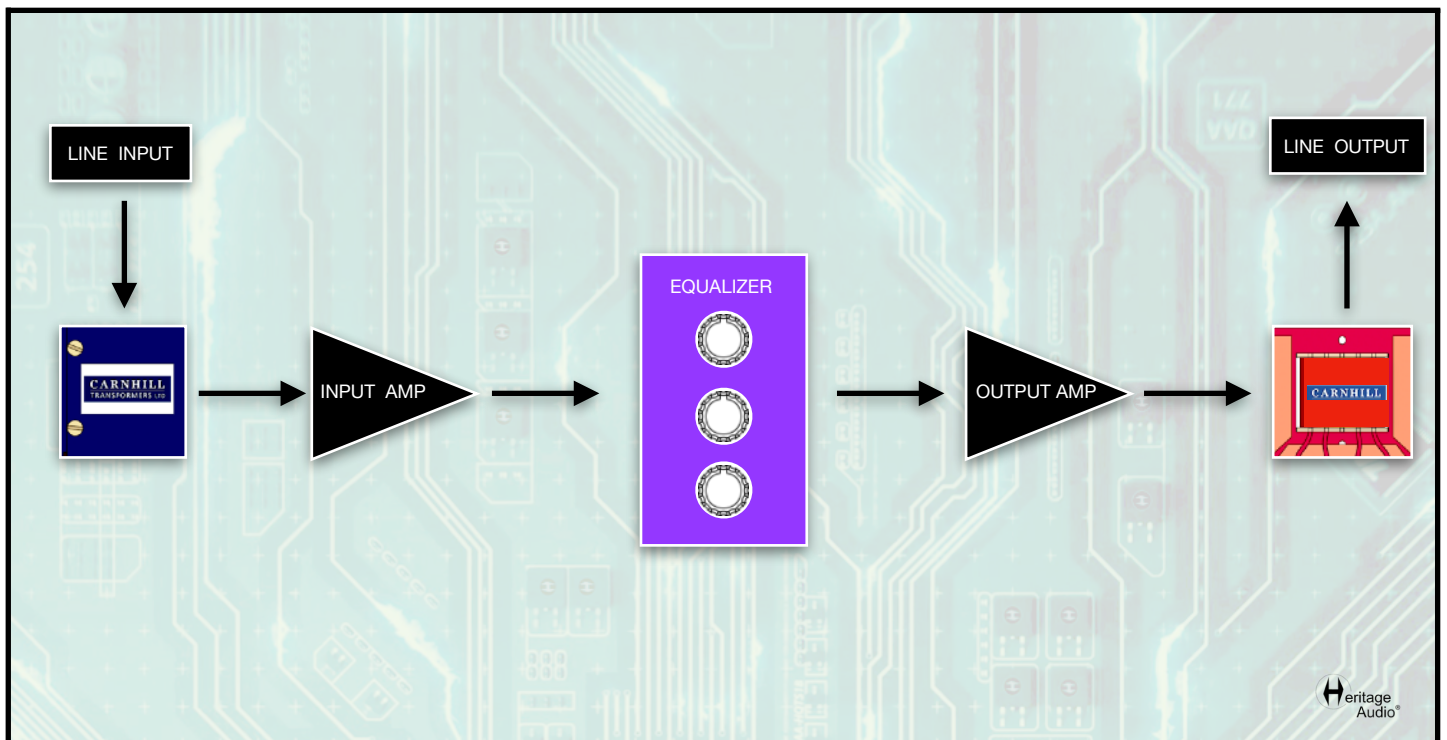


SPECIFICATIONS



- **Input impedance:** 10 k Ω bridging, transformer balanced and floating.
- **Output impedance:** Less than 75 Ω , transformer balanced and floating, to drive a load of 600 Ω load.
- **Maximum output:** Greater than +26 dBu into 600 Ω .
- **THD:** Less than 0,025 % at 1 kHz, Less than 0,05 % at 100 Hz.
- **Maximum Gain:** 6 dB.
- **Power consumption:** Less than 85 mA per rail @ ± 16 V DC.
- **Dimensions (W x H x L):** 38 mm x 135 mm x 150 mm.

SIGNAL FLOW



TROUBLE SHOOTING



PROBLEMS	SOLUTIONS
There doesn't appear to be any tonal change at all from the 73 EQ JR.	Make sure the GAIN knob is not in the 'Off' position.
There still doesn't appear to be any tonal change at all from the 73 EQ JR.	Check to see if the EQL button has been pushed to activate it.
Even at the lowest position on the LINE GAIN knob I still have too much gain.	You will have to reduce the signal level being sent to the 73 EQ JR.
There seems to be a very high output from the unit.	Adjust the LINE GAIN knob to compensate for any tonal adjustments made that raise the signal too much.
There seems to be a very low output from the unit.	Adjust the LINE GAIN knob to compensate for any tonal adjustments made that lower the signal too much.

* For any further doubts or questions please get in contact with us at: support@heritageaudio.com

WARRANTY STATEMENT

LIMITED 2 YEAR WARRANTY

Heritage Audio 73 EQ JR is warranted by Heritage Audio SL to be free from defects in materials and workmanship for the period of 2 years to the original purchaser. In the event of such defects, the product will be repaired without charge or, at our option, replaced with a new one if delivered to Heritage Audio prepaid, together with a copy of the sales slip or other proof of purchase date. The warranty excludes problems due to normal wear, abuse, shipping damage or failure to use the product in accordance with the specifications.

Heritage Audio shall not be liable for damages based upon inconvenience, loss of use of the product, loss of time, interrupted operation or commercial loss or any other damages, whether incidental, consequential or otherwise.

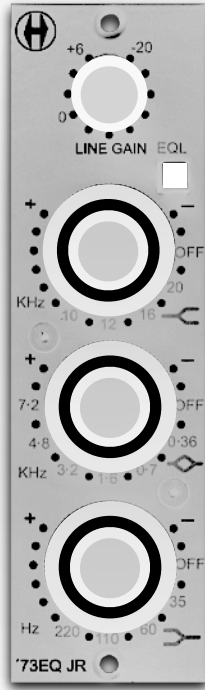
This warranty is not transferable.



REGISTRATION

Please visit our website: <https://heritageaudio.com/registration/>

RECALL SHEETS

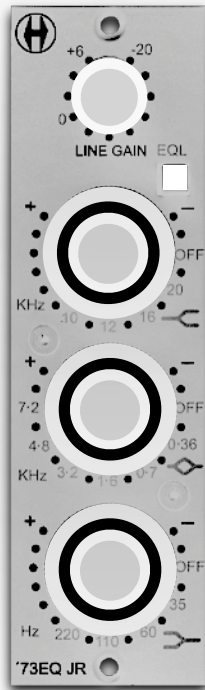


Session / Title: _____ Track: _____ Connected Equipment: _____

Switch **ON**

Date: _____ Instrument: _____ Notes: _____

Switch **OFF**



Session / Title: _____ Track: _____ Connected Equipment: _____

Switch **ON**

Date: _____ Instrument: _____ Notes: _____

Switch **OFF**



www.heritageaudio.com

HERITAGE AUDIO. C/ Alfonso Gómez, 38, 3C. 28037 Madrid – Spain. Tel: +34 917 266 189

info@heritageaudio.com

